



**Anime as a
pedagogy tool
for Race, Class, &
Gender**

By: Zoie Moore

Anime

- Manga are Japanese comics
- Anime is the Japanese version of all forms of animation



Pedagogy

The method, approach, and practice, of teaching.

- the way teachers deliver the content of the curriculum to a class

THE PROMISED NEVERLAND



The Promised Neverland follows three protagonists, Emma, Norman, and Ray, along with a cast of orphans who live together. Their lives have been full of joy, that is until the protagonists learn the orphanage is really a farm where children are raised and given to demons to be eaten. Learning that they have a limited amount of time on their side, the three work out a plan to escape with the rest of the children.



Isabella/Mama

- Motherly
- Nurturing/caring
- Manipulative
- Cunning
- Dominant
- Slender frame
- European features

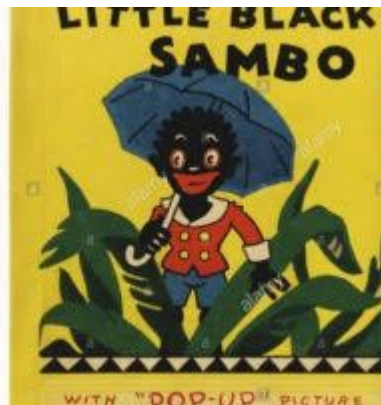




Sister Krone

- Heighten senses (speed, hearing, strength)
 - Intelligent
 - **Caricature like features**
 - “tough-looking, muscle-bound young woman who seems like she would speak shady-sounding broken Japanese”
-





...AROUND BLACKS







Black Butler

Set in Victorian England, fourteen-year-old Ciel Phantomhive, the last surviving member of an aristocratic family, as he sells his soul to his demon butler in exchange for the ability to take revenge on his parents' murderers.

Victorian Era 1837-1901

- England's Queen Victoria (Britain's second-longest reigning monarch)
- Industrial Revolution (railroads and steamships)
- Charles Darwin (natural selection)
- Charles Dickens and Bronte Sisters
- Technological advancements (telegram, telephone)
- Slavery abolished in 1834
 - the government provides damages to slave owners, but nothing to slaves.
- Irish Potato Famine in 1845
- Jack the Ripper (murdered prostitutes)
- India declares Queen Victoria as empress in 1876

Social class in Britain

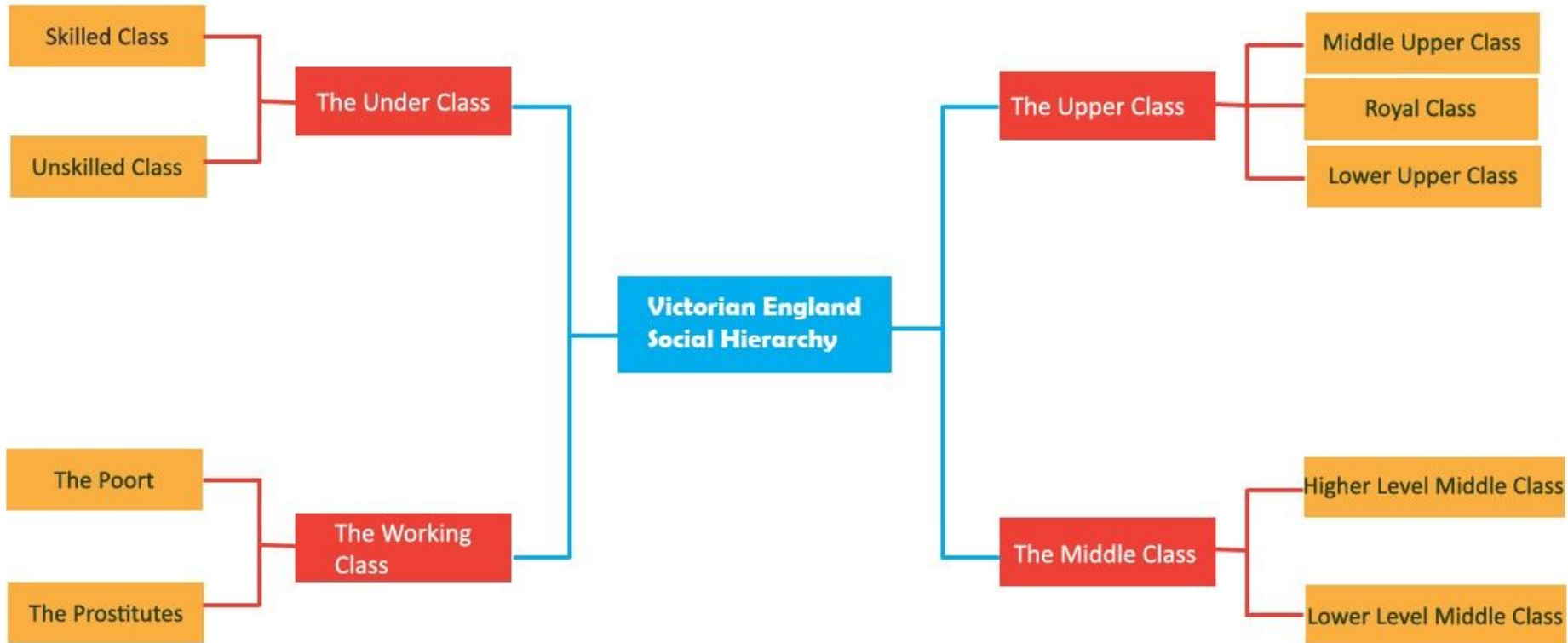
Upper-Aristocrats, Nobles, Dukes, other wealthy families working in the Victorian courts, best tutors for education,

Working Class- Skilled vs Unskilled

Skilled: Industrial Revolution=jobs=improved living condition. had acquired enough power to enable them to establish Trade Unions

Unskilled: construction workers, rat catchers, railway porters

Under class (Sunken people): those living on the streets, extreme poverty





Aristocrats of Evil

Aristocrats of Evil/Evil Noblemen/ Villainous Nobels

- a special, secretive organization that involves the Phantomhive house, and its aggregate of upper-class associates
- eliminating all sources of the Queen's distress and stamping out illegal acts in the underworld that may affect polite society

Ciel Phantomhive is now the Queen's Watchdog

- Does the Queen's underground/dirty work



Influence with the police and Drugs

- Scotland Yard (Metropolitan Police Service (MPS))
 - accountable for law enforcement and the maintenance of security. In charge of conducting investigations
 - Protects the British Royal Family and delivers bribe money to Ciel
 - Ciel and Yard have two different values (Yard=inefficient, Ciel=immoral)
- 2nd Opium War-1856-1860 (trade dispute)
 - Ciel has left the administration of the Oriental quarter, the East End, and black-market docks to Lau.



Scotland Yard



Lau's Opium Den

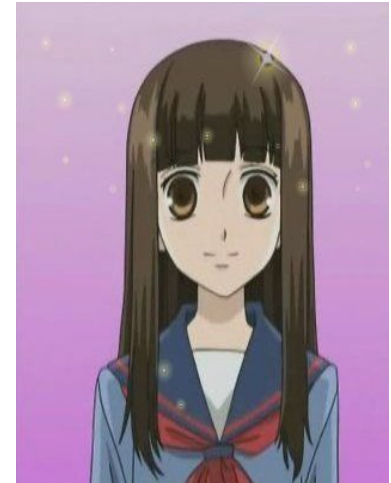


OURAN High School
HOST
CLUB

Ouran Highschool Host Club

At the ultra prestigious Ouran High School, Haruhi Fujioka looks for a quiet place to read and walks into an unused music room, and accidentally stumbles across the notorious Ouran Highschool Host Club, a group of boys who entertain the girls of the school for profit. When Haruhi accidentally breaks an expensive vase belonging to the wacky Host Club, she is made to serve under them until her debt is paid off. Haruhi is soon made a Host, but in order to pay off what she owes, she must continue to allow the Host Club's customers to believe she is a boy.

According to modern gender theorists like Judith Butler, **gender itself is a matter of "performance."** It isn't something that is programmed within us, but something that is **constantly being constructed as we portray gendered signals through clothing, mannerisms, and more.**



Haruhi's performance

- Haruhi's performance as a male host is a “performative act”.
 - Although Haruhi wears a male uniform as a Host, they stay true to themselves
 - Responds to both masculine and feminine pronouns
 - Jokes that in order to keep up a male facade, they'll just "call everybody 'dude' and 'bro' from now on"...
 - Jokes that she will refer to herself as “ore” (Japanese self identity used for “macho” guys)
- Haruhi never states their gender, goes by jibun (meaning (one)self)
- Any signals of masculinity or femininity are perceived by others' perception, rather than deliberate intent on Haruhi's part.



Haruhi Fujioka

"Listen, Senpai, I don't really care whether you guys recognize me as a boy or a girl. In my opinion it's more important for a person to be recognized for who they are, rather than for what sex they are."

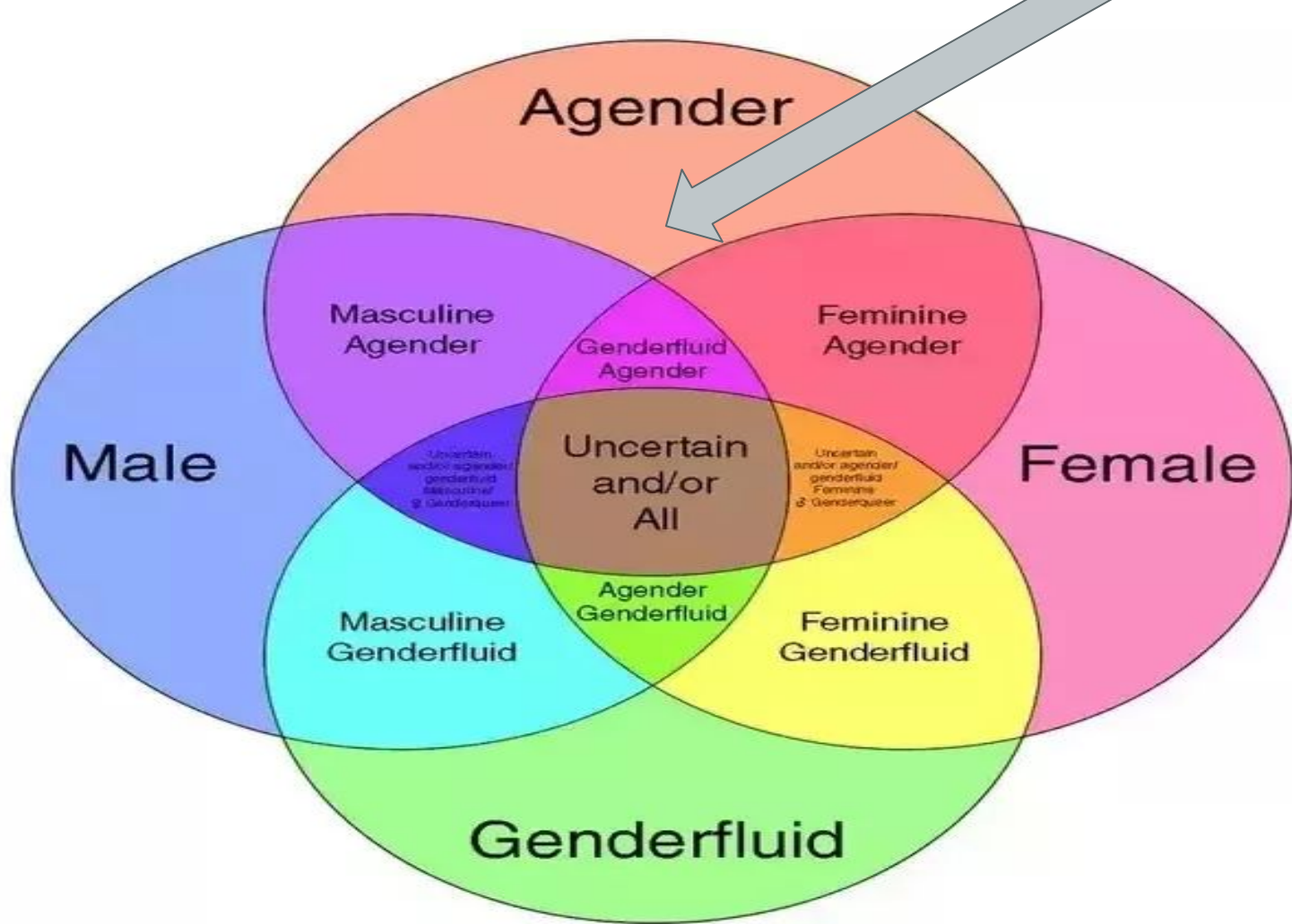
Haruhi... You're a girl?"

"Biologically, yes.

"Senpai, if you all think of me as a boy, then that's okay with me too."

"My feeling is that any awareness of being a boy or a girl falls lower than that of being a person."

"From now on, I'll start using 'ore.'"



Discussion Questions–Race

1. Many people feel sympathy for Krone, while others call her insane. Does her physical characteristics support either cause?
2. Should any actions be taken? Should there be any consequences? If so, to who, why, and how?
3. Do animation studios (like Disney/Pixar) have a responsibility to educate their audience about topics such as race?

Discussion Questions-Class

1. Can a society have a fair share of power evenly distributed to its people?
2. How can those who are wealthy share their political power? If so, how? If not, why?
3. Why is power so associated with money? Who is responsible for this? (media, politicians, etc.)

Discussion Questions-Gender

1. If gender is a “performance”, what does it mean to be “natural”?
2. Where would you identify Haruhi on the circle and why?
3. Is there anything you would change about the gender fluidity circle? If so, what? If not, why?



<https://popcultureuncovered.com/2016/02/24/ouran-high-school-host-club-gender-neutral-is-the-new-frontier/>
<http://maggiesensei.com/2011/08/05/request-lesson-%E7%A7%81%EF%BC%8B%E8%87%AA%E5%88%86-watashi-jibun-first-person-singular-pronoun/>

<https://www.teenvogue.com/story/what-is-agender>

<http://androgynousanime.blogspot.com/2014/01/haruhi-fujioka-and-gender-trap.html>

<https://digitalasia.blog/2014/09/18/sexuality-and-gender-in-anime/>

<https://www.bustle.com/articles/109255-what-does-agender-mean-6-things-to-know-about-people-with-non-binary-identities>

<https://www.thesun.co.uk/fabulous/6229054/non-binary-genderqueer-identity-agender-genderfluid-meaning/>

References for gender

<https://www.history.com/topics/19th-century/victorian-era-timeline>

<https://www.english-heritage.org.uk/learn/story-of-england/victorian/power-and-politics/>

<http://victorian-era.org/victorian-era-society.html>

<http://victorian-era.org/royal-british-nobility.html>

<http://www.victorianweb.org/history/Class.html>

<http://www.victorianweb.org/history/work/index.html>

<https://www.mit.edu/~rei/Expl.html> (what is anime)

<https://www.tes.com/news/what-is-pedagogy-definition>

<https://www.nam.ac.uk/explore/opium-war-1839-1842>

References for class